



Collaboration and Forest Industry across the Blues

Mike Billman, Federal Forest Restoration Coordinator, Oregon Department of
Forestry – Northeast Oregon District

Mark Webb, Executive Director - Blue Mountain Forest Partners, John Day

Nils Christoffersen, Executive Director - Wallowa Resources, Enterprise

Blue Mountain Forest Partners Collaboration in the Southern Blues

Mark Webb, Blue Mountain Forest Partners



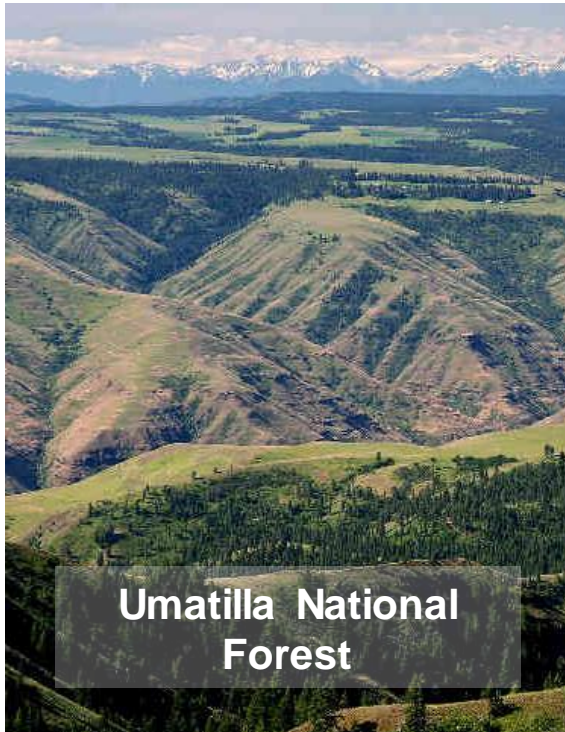
Blue Mountains Forest Partners is a diverse group of stakeholders who work together to create and implement a shared vision to improve the resilience and well-being of forests and communities in the Blue Mountains.



Without the social acceptance of appropriate forest management, little will change.

Northern Blues Restoration Partnership

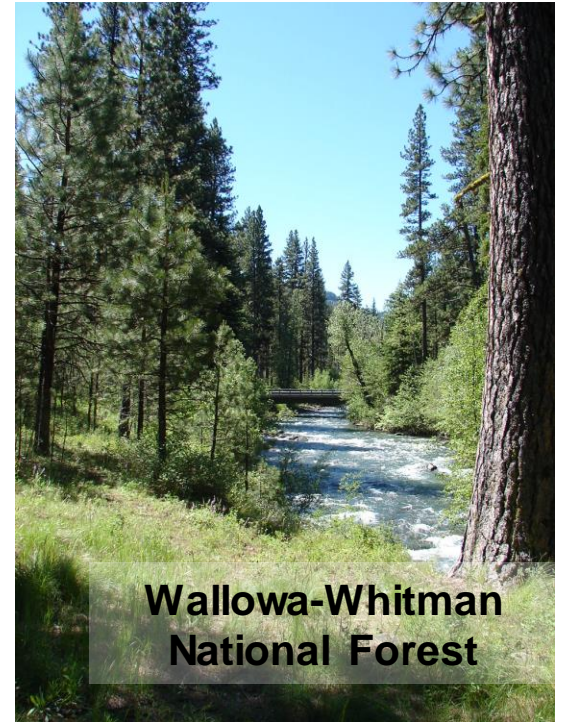
Nils Christoffersen, Wallowa Resources



**Umatilla National
Forest**



NORTHERN BLUES
RESTORATION PARTNERSHIP



**Wallowa-Whitman
National Forest**

OUR MISSION

Empower rural communities to create strong economies and healthy landscapes through land stewardship, education, and job creation.

WE

Innovate
Incubate
Implement



OUR ROLE

Since our inception in 1996, we have, and continue to, work hard to bring our vision of a Stewardship Economy to life

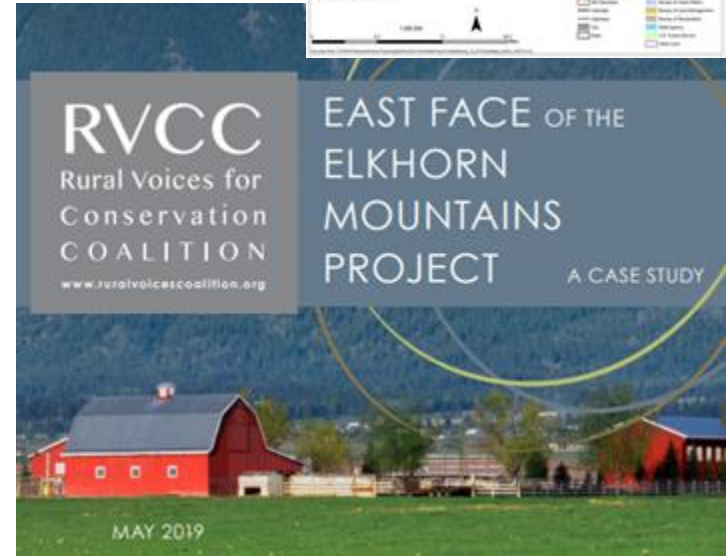
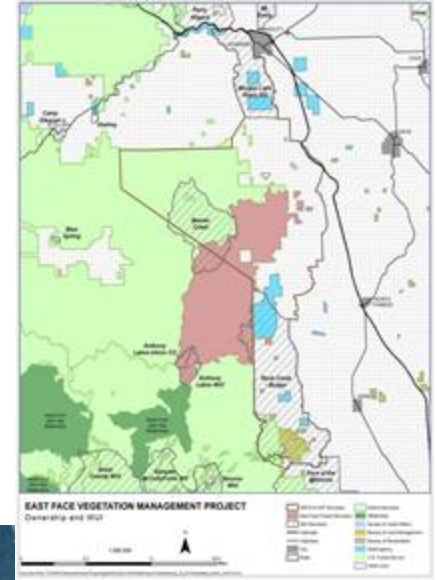
Land + Water
Stewardship

Education &
Training
Advocacy

Rural Community
Vitality

Economy +
Community

Moving to All-Lands Restoration



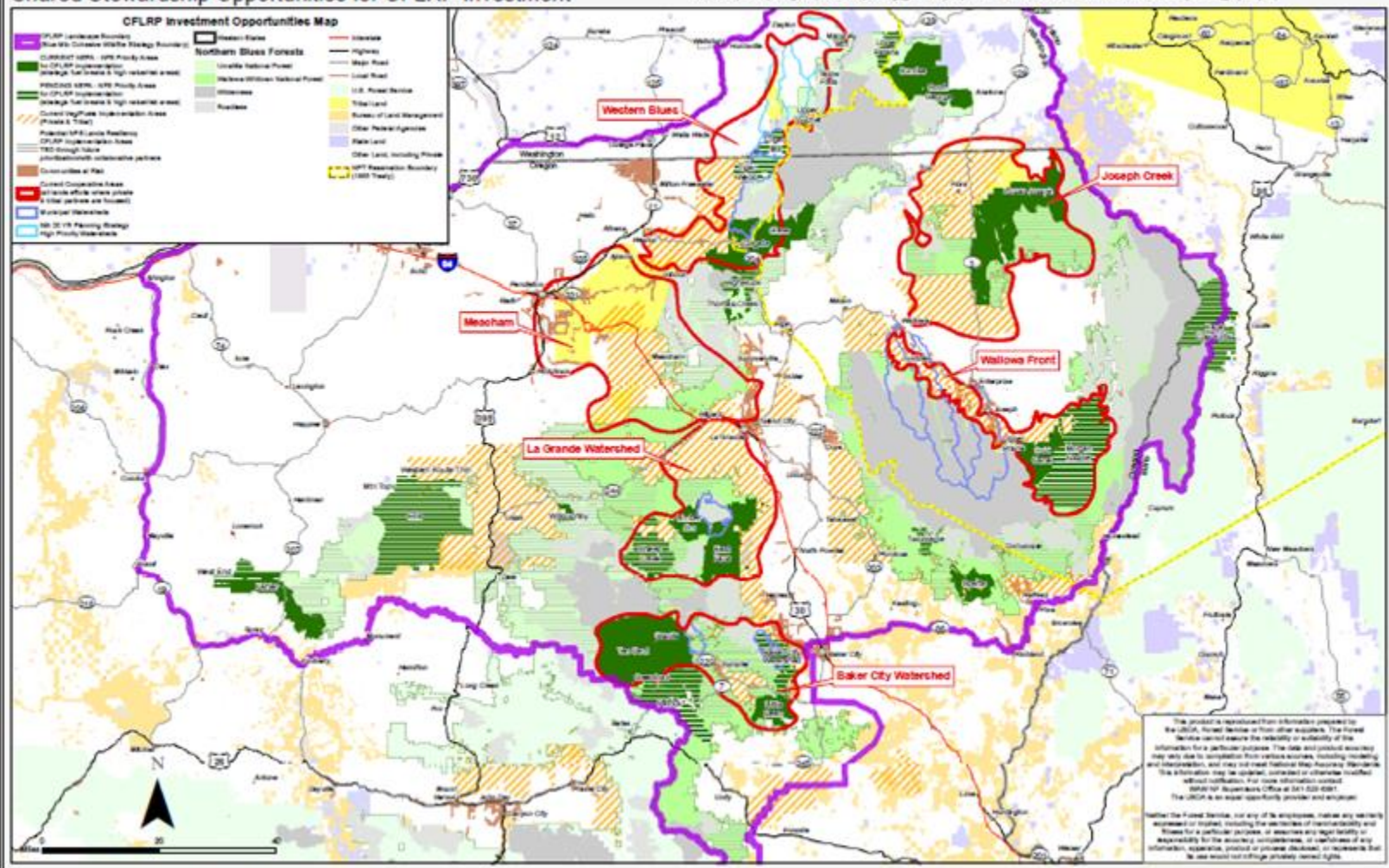


MAP 2 - NORTHERN BLUES CFLRP LANDSCAPE PROPOSAL

Partners are actively restoring lands (boundary orange stripe) adjacent to the Forests. Priorities for cooperative off-lands efforts (red outlines) reflect significant opportunities for cross-boundary collaboration. Year 1-5 USFS priorities for strategic fuels breaks and special resource protection lie within NEPA-completed (dark green) or NEPA-pending (green striped) areas. Year 5-10 efforts would extend to feasibility areas (gray striped).

Date: 10/2015

Shared Stewardship Opportunities for CFLRP Investment



OVERVIEW

Acres Treated

194,769

Total acres that received restoration treatment across all lands within the Project Area (2021-2031).

[About this Statistic](#)

Percent Complete

22%

The NBR Partnership has the goal of treating 900,000 acres across the Project Area by 2031.

[About this Statistic](#)

Funding Invested

\$33,806,633

Total funds spent across all years within the partnership boundary.

Jobs Supported

1,648

Cumulative annual jobs supported or maintained through the Partnership.



Esri, USGS | Oregon State Parks, Esri, HERE, Garmin, FAO, NOAA, USGS Bureau of Land Management, ... Powered by Esri



About the Partnership

The Northern Blues Restoration Partnership (NBRP) is a coalition of diverse local and regional partners who have come together to work on a common challenge to coordinate and implement forest and fire resiliency restoration projects on public, private and tribal forestland across the southeast Washington and northeast Oregon Northern Blue Mountains region.

This collaborative effort uses education, outreach, and increased shared capacity through partnerships. We believe that incorporating a wide diversity of interested voices into respectful, constructive conversations can increase the ecological health of the forest, the economic opportunity in our region, and the social harmony in our community.

Partners



The Nature Conservancy

Oregon State University Extension Service

Western Environmental Law Center



USDA

woodgrain

10 year projection



901,600 acres of restoration treatment

Two years into our project we have...

138,000 acres

Of active restoration treatments

57,000 acres

Of beneficial/managed wildfire

2022 SOCIOECONOMIC IMPACT METRICS

\$11.8 Million

Invested on
FS lands

\$6.2 Million

Invested on private and
Tribal lands

60% of funds

Awarded to local
contractors, nonprofits,
and Tribes

733 Jobs

Supported
(direct and indirect)

Discussion and Q&A

